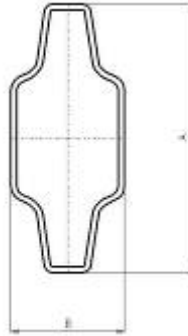


## ALUMINIUM ELECTRO-WELDED GEORGIAN BAR



| A  | B | AL7 CODE | Thickness Wall |
|----|---|----------|----------------|
| 18 | 5 | NW1805   | 0.39 mm        |
| 18 | 8 | NW1808   | 0.39 mm        |
| 25 | 8 | NW2508   | 0.39 mm        |

### FINISHING

Mill Finish, Powder-Coated, Anodized,  
Foiled\*, Half Foiled\*

\* Renolit®; Hornschuch®

### PACKAGING

| SIZE | AL7 CODE | Metres per Container | Dimensions cm | Gross Weight kgs |
|------|----------|----------------------|---------------|------------------|
| 18x8 | NW1808   | 5700                 | 312x79x52     | 377,00           |
| 25x8 | NW2508   | 3600                 | 312x79x52     | 315,00           |

| SIZE | AL7 CODE | Metres per Box | Dimensions cm | Gross Weight kgs |
|------|----------|----------------|---------------|------------------|
| 18x5 | NW1805   | 375            | 303x14x10     | 18,60            |
| 18x8 | NW1808   | 285            | 303x14x10     | 16,10            |
| 25x8 | NW2508   | 192            | 303x14x10     | 14,90            |

### CERTIFICATIONS

|   |   |   |
|---|---|---|
| Qualicoat®                                      |  | Licence No. 774<br>dated 03.08.2006                     |
| SSV – Fogging Test<br>DIN EN 1279-6 ANNEX C – G |   | Certificate no. 83741, 83742, 83743<br>dated 27.08.2007 |

Please, see terms and conditions of sale.

All shapes, colours, dimensions and packaging mentioned in this catalogue are purely indicative and have non contractual value.



4-Way Centre Key

| A  | B | AL7 CODE | Pcs/Box | Dimensions<br>cm | Gross Weight<br>Kgs |
|----|---|----------|---------|------------------|---------------------|
| 18 | 5 | 1832CS   | 1000    | 40x30x21         | 6,70                |
| 18 | 8 | 1842CS   | 500     | 40x30x21         | 3,20                |
| 25 | 8 | 2542CS   | 500     | 40x30x26         | 6,70                |

**FINISH**

White, Ivory, Brown, Woodgrain (LE07)



4-Way Internal Key

| A  | B | AL7 CODE | Pcs/Box | Dimensions<br>cm | Gross Weight<br>Kgs |
|----|---|----------|---------|------------------|---------------------|
| 18 | 8 | 1872CS   | 500     | 40x30x21         | 2,70                |
| 25 | 8 | 2572CS   | 500     | 40x30x26         | 6,20                |

**FINISH**

Neutral, Coloured

*Please, see terms and conditions of sale.*

*All shapes, colours, dimensions and packaging mentioned in this catalogue are purely indicative and have non contractual value.*



4-Way Square Buffer  
Centre Key

| A  | B | AL7 CODE | Pcs/Box | Dimensions<br>cm | Gross Weight<br>Kgs |
|----|---|----------|---------|------------------|---------------------|
| 18 | 8 | 1862CS   | 500     | 40x30x21         | 3,10                |

**FINISH**

White, Ivory, Brown, Woodgrain (LE07)



Square Buffer Insert  
H. 9.5 mm

| A  | B | AL7 CODE  | Pcs/Box | Dimensions<br>cm | Gross Weight<br>Kgs |
|----|---|-----------|---------|------------------|---------------------|
| 18 | 8 | 7089095CS | 1000    | 24x18x14         | 0,36                |

**FINISH**

White, Brown

*Please, see terms and conditions of sale.*

*All shapes, colours, dimensions and packaging mentioned in this catalogue are purely indicative and have non contractual value.*



3-Way Centre Key

| A  | B | AL7 CODE | Pcs/Box | Dimensions<br>cm | Gross Weight<br>Kgs |
|----|---|----------|---------|------------------|---------------------|
| 18 | 5 | 1833CS   | 1000    | 40x30x21         | 5,50                |
| 18 | 8 | 1843CN   | 200     | 24x18x14         | 1,00                |
|    |   | 1843CS   | 1000    | 40x30x21         | 4,90                |

**FINISH**

White, Ivory, Brown, Woodgrain (LE07)



3-Way Square Buffer  
Centre Key

| A  | B | AL7 CODE | Pcs/Box | Dimensions<br>cm | Gross Weight<br>Kgs |
|----|---|----------|---------|------------------|---------------------|
| 18 | 8 | 1863CN   | 200     | 24x18x14         | 0,98                |
|    |   | 1863CS   | 1000    | 40x30x21         | 4,80                |

**FINISH**

White, Ivory, Brown, Woodgrain (LE07)

*Please, see terms and conditions of sale.*

*All shapes, colours, dimensions and packaging mentioned in this catalogue are purely indicative and have non contractual value.*



Staple End Connector

| A  | B | AL7 CODE | Pcs/Bag | Dimensions<br>cm | Gross Weight<br>Kgs |
|----|---|----------|---------|------------------|---------------------|
| 18 | 5 | 1834CS   | 1000    | 40x25x3          | 0,89                |
| 18 | 8 | 1844CS   | 1000    | 40x25x5          | 1,03                |
| 25 | 8 | 2544CS   | 1000    | 50x35x5          | 1,42                |

**FINISH**

Neutral



Clip End Connector

| A  | B | AL7 CODE | Pcs/Bag | Dimensions<br>cm | Gross Weight<br>Kgs |
|----|---|----------|---------|------------------|---------------------|
| 18 | 8 | 1845CS   | 1000    | 40x25x5          | 0,75                |
| 25 | 8 | 2545CS   | 1000    | 50x35x5          | 1,30                |

**FINISH**

White, Ivory, Brown

*Please, see terms and conditions of sale.*

*All shapes, colours, dimensions and packaging mentioned in this catalogue are purely indicative and have non contractual value.*



Saddle Clip Kit

| A  | B | AL7 CODE | Pcs/Bag | Dimensions<br>cm | Gross Weight<br>Kgs |
|----|---|----------|---------|------------------|---------------------|
| 18 | 8 | S02CS    | 1000    | 40x25x3          | 1,84                |
| 25 | 8 | S03CS    | 1000    | 40x25x5          | 2,44                |

**FINISH**

White, Ivory, Brown



Adjustable Sunburst Kit  
for Variable Angles  
from 15° to 165°

| A  | B | AL7 CODE | Pcs/Bag | Dimensions<br>cm | Gross Weight<br>Kgs |
|----|---|----------|---------|------------------|---------------------|
| 18 | 8 | V02CS    | 25      | 40x25x5          | 0,63                |
| 25 | 8 | V02CS    | 25      | 40x25x5          | 0,63                |

**FINISH**

Neutral



Semicircle Sunburst  
Cover

φ

| φ<br>mm | AL7 CODE | Pcs/Bag | Dimensions<br>cm | Gross Weight<br>Kgs |
|---------|----------|---------|------------------|---------------------|
| 120     | U08120CS | 25      | 40x25x5          | 0,38                |
| 200     | U08200CS | 25      | 40x25x5          | 1,30                |
| 300     | U08300CS | 25      | 50x35x5          | 2,40                |

**FINISH**

White, Ivory, Brown

Please, see terms and conditions of sale.

All shapes, colours, dimensions and packaging mentioned in this catalogue are purely indicative and have non contractual value.



Assembling Set with  
Round Pin  $\phi$  4 mm

| A  | B | AL7 CODE           | Pcs/Box | Dimensions<br>cm | Gross Weight<br>Kgs |
|----|---|--------------------|---------|------------------|---------------------|
| 18 | 8 | Under Construction | 500     | ---              | ---                 |
| 25 | 8 | 2508KECS           | 500     | 40x30x21         | 9,80                |

**FINISH**

Neutral, Black

*Please, see terms and conditions of sale.*

*All shapes, colours, dimensions and packaging mentioned in this catalogue are purely indicative and have non contractual value.*